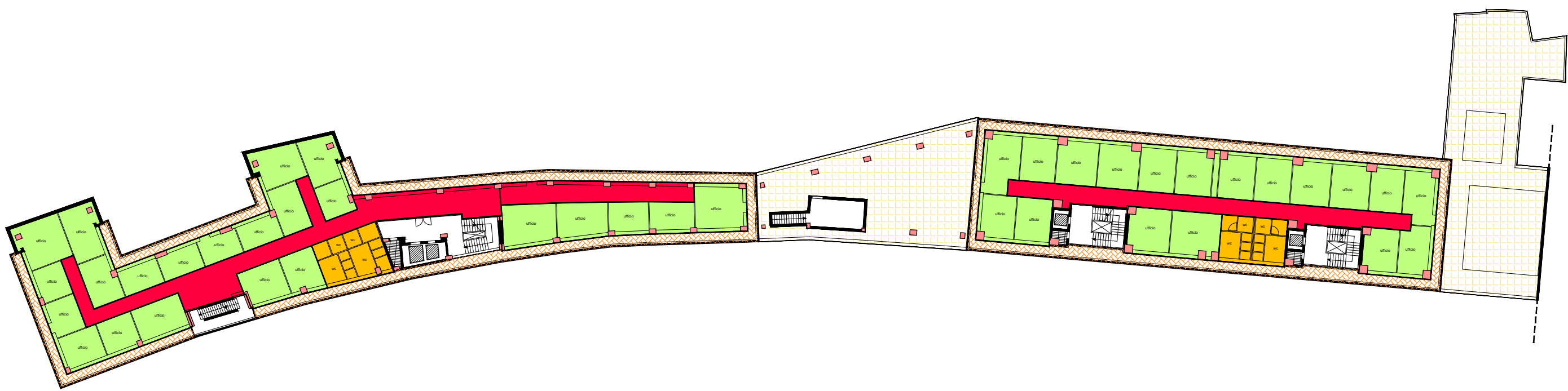



RAGUSA CENTRO

PIANO SECONDO VIA MONS. A. RIZZO  
(PIANO A QUOTA 521,25)

4



	UFFICI TRIBUNALE	mq	996,52
	CORRIDOI	mq	316,09
	WC	mq	89,49
	BALCONI CHIUSI	mq	392,56
	SPAZIO ESTERNO	mq	614,82